

1. Table of Contents (This Page)  
Created on Wed Mar 28 22:20:22 2012

2. component

3. solder

4. plated-drill

5. componentmask

6. soldermask

7. topsilk

8. bottomsilk

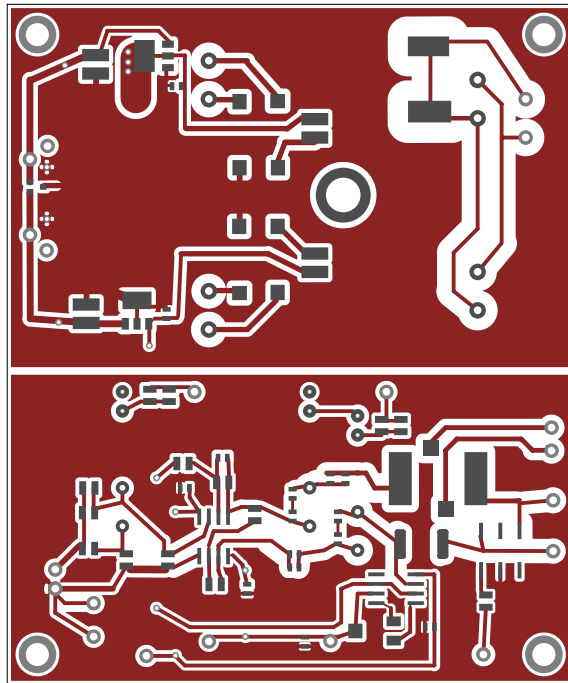
9. toppaste

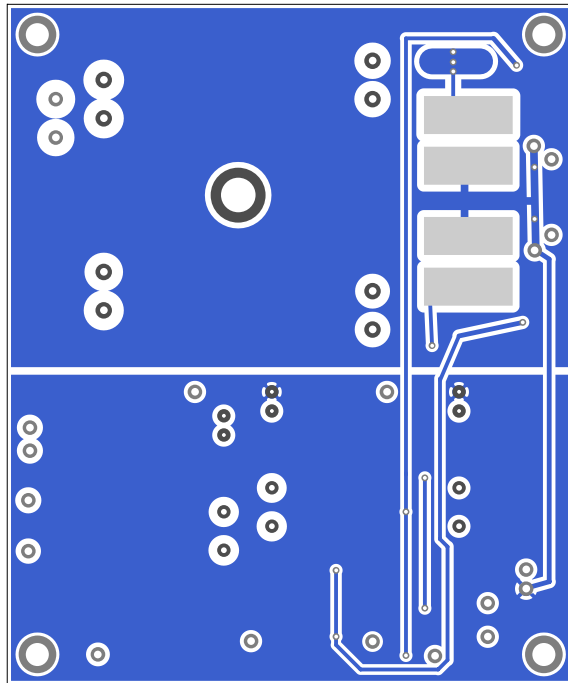
10. bottompaste

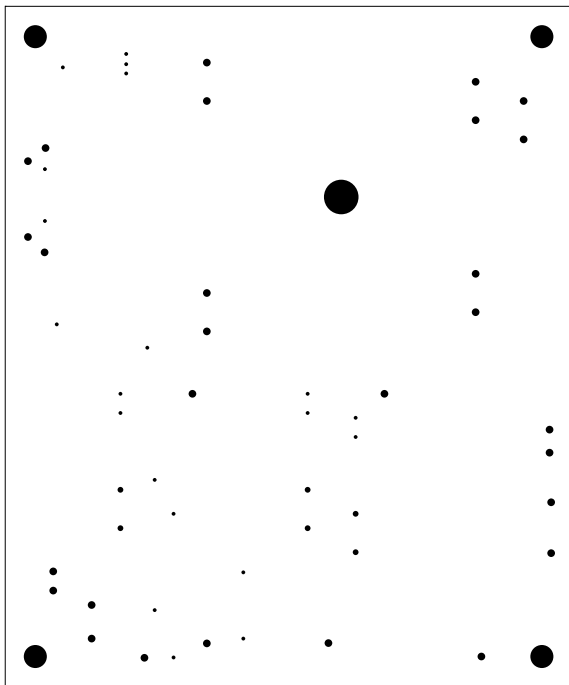
11. topassembly

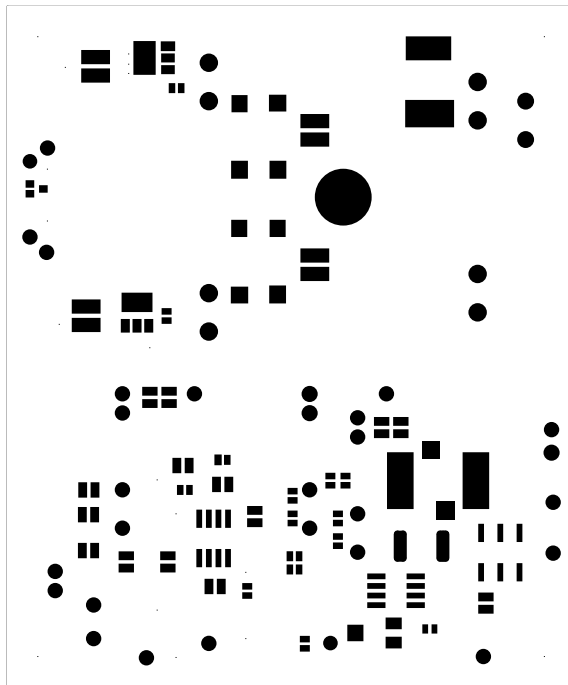
12. bottomassembly

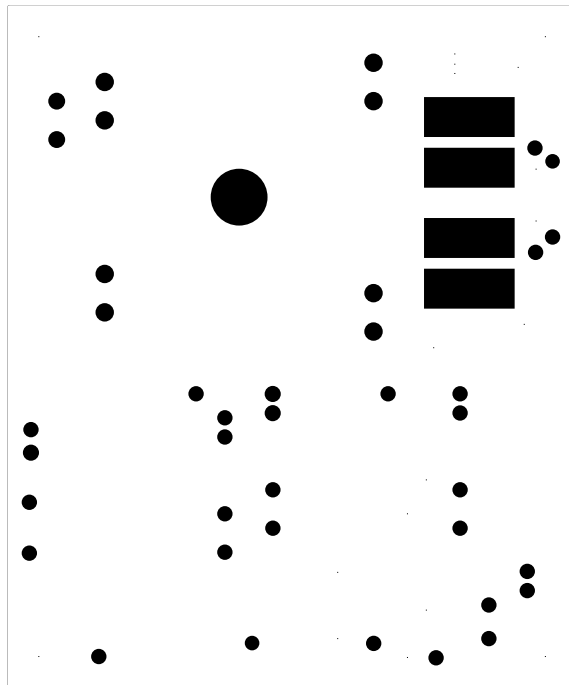
13. fab

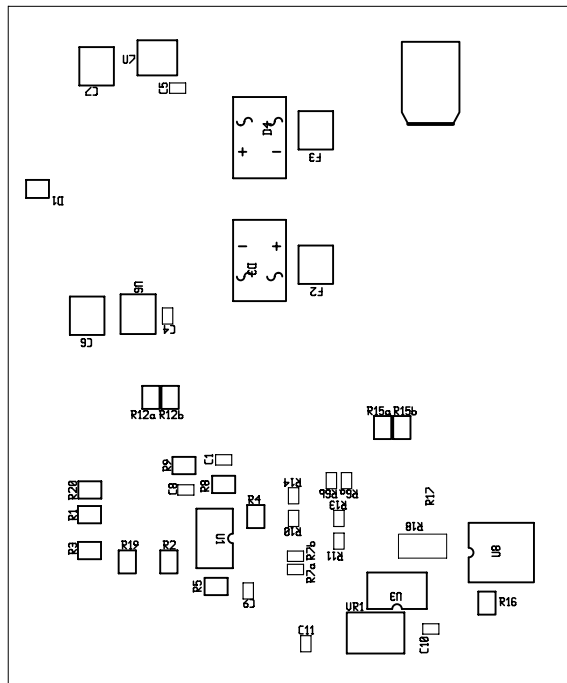


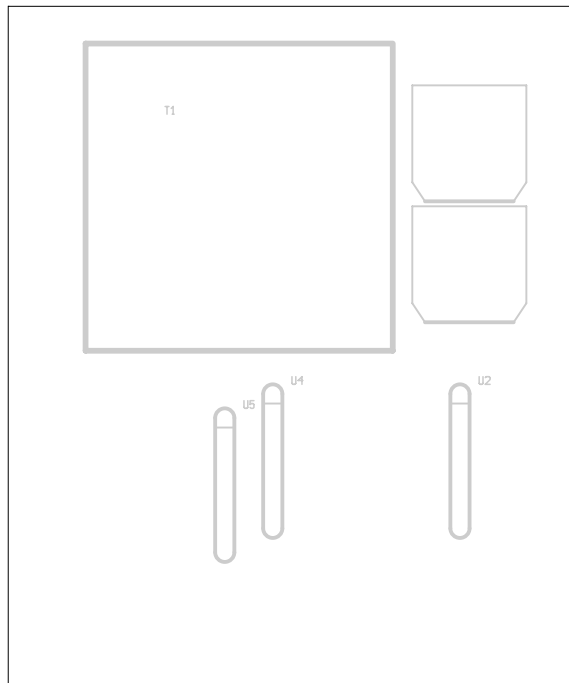




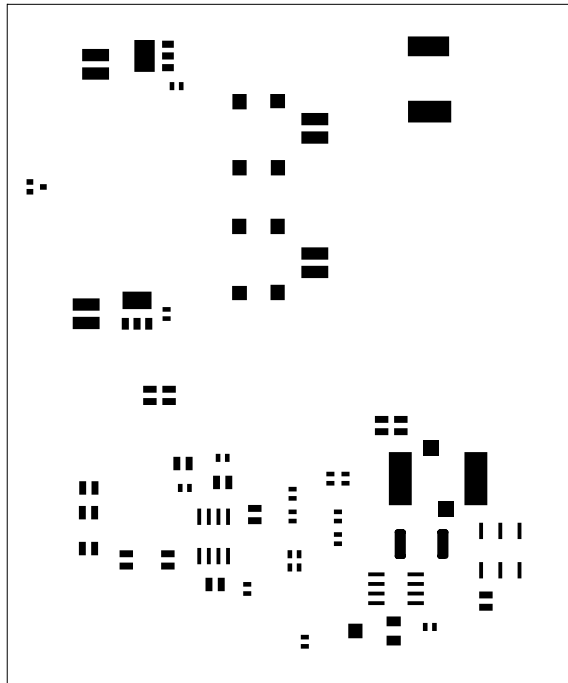


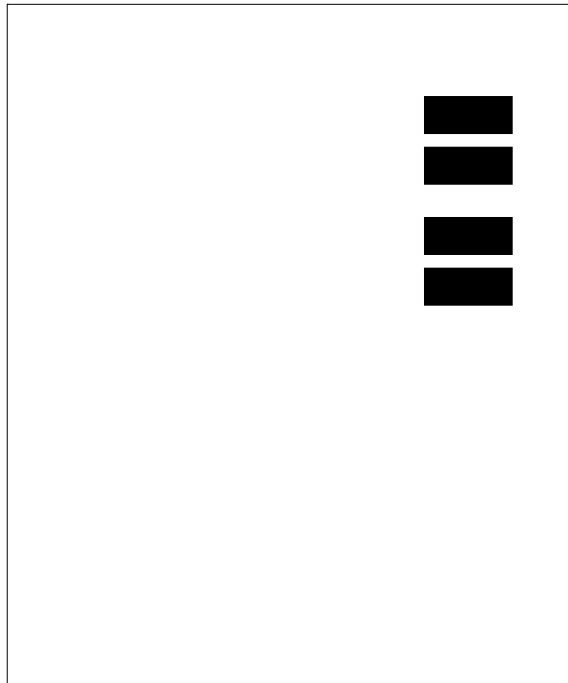


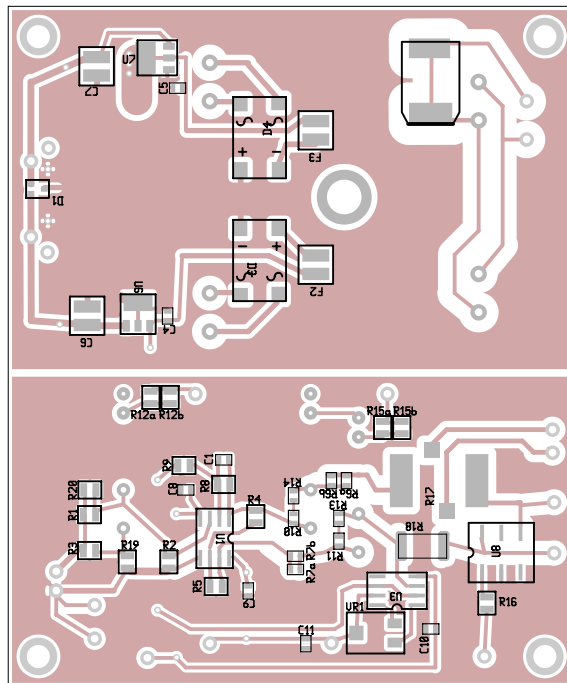


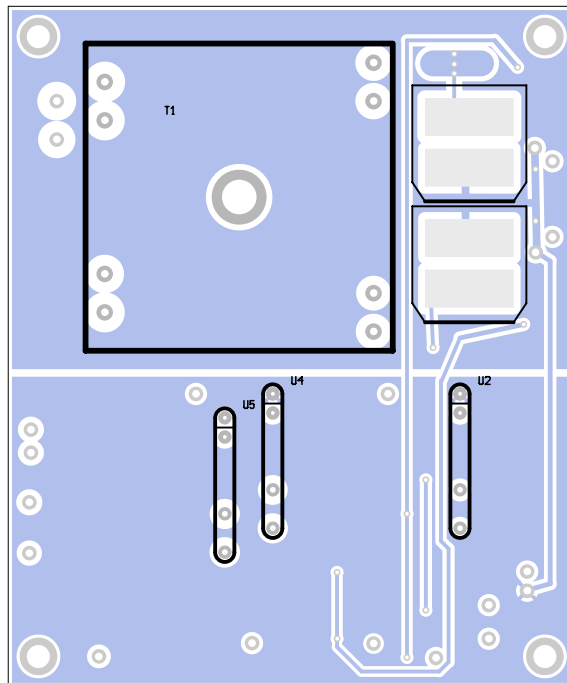












There are 5 different drill sizes used in this layout, 59 holes total

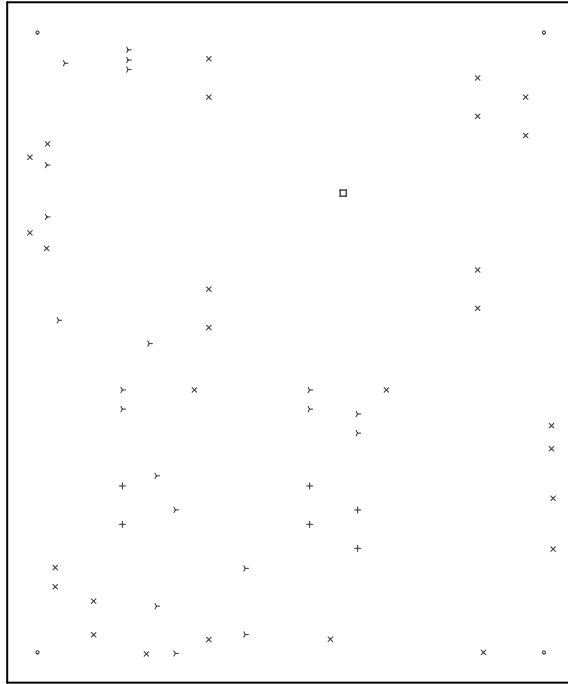
Symbol	Diam. (Inch)	Count	Plated?
Y	0.020	20	YES
+	0.030	6	YES
X	0.040	28	YES
o	0.120	4	YES
□	0.180	1	YES

Title: (unknown) - Fabrication Drawing

Author: northriv

Date: 3/28 13:20:23 2012 UTC

Maximum Dimensions: 3543.310000 mils wide, 2952.760000 mils high



Board outline is the centerline of this 8.000000 mil rectangle - 0.0 to 3543.310000, 2952.760000 mils