

Hubs and Authorities in the World Trade & World Investment Network

Tsuyoshi Deguchi¹, Katsuhide Takahashi^{1,2}, Hideki Takayasu^{3,4}, Misako Takayasu^{1*}

¹ Department of Computational Intelligence and Systems Science, Interdisciplinary Graduate School of Science and Engineering, Tokyo Institute of Technology, Midori-ku, Yokohama, Japan,

² Department of Economics, Kokugakuin University, Shibuya-ku, Tokyo, Japan,

³ Sony Computer Science Laboratories, Shinagawa-ku, Tokyo, Japan,

⁴ Graduate School for Advanced Mathematical Sciences, Meiji University, Tokyo, Japan

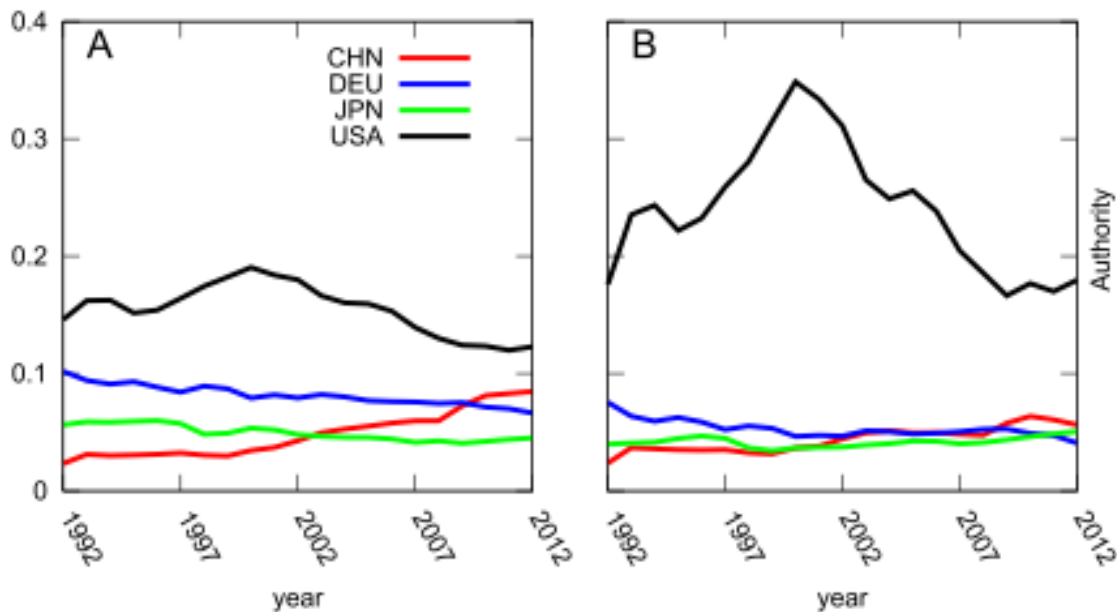
E-mail address: Katsuhide Takahashi taka8664@kokugakuin.ac.jp

Abstract

We investigate the economic hubs and authorities of the world trade network (WTN) as well as world investment network (WIN). Using a well-defined weighted hyperlink-induced topic search (HITS) algorithm, we can calculate the values of the weighted HITS hub and authority for each country. In the context of the WTN, authority values are large for countries with significant imports from large hub countries, and hub values are large for countries with significant exports to high-authority countries. The United States was the largest economic authority in the WTN from 1992 to 2012. The authority value of the US has declined since 2001, and China has now become the largest hub. We also observed that the network structure of the WIN is much simpler than that of WTN, which suggests that high-authority countries like the US and Japan have kept stronger influence in the WIN compared with the WTN.

Keyword: Hub, Authority, Weighted HITS algorithm, World Trade Network, World Investment Network

Figure Transition of Imports Shares from 1992–2012 shown in panel (A). Transition of Authority Values from 1992–2012 (B)



References

- [1] Deguchi T, Takahashi K, Takayasu H, Takayasu M (2014) Hubs and Authorities in the World Trade Network Using a Weighted HITS Algorithm. *PloS ONE* 9(7): e100338. doi:10.1371/journal.pone.0100338

1. Manuscript Format

Title part

Please provide the following information in the beginning of the manuscript.

1. Talk title,
2. Names of the authors,
3. Affiliations,
4. Addresses,
5. E-mail addresses (please give at least one e-mail address)

Abstract

Abstract should be no longer than 150 words. Please also provide a few keywords for your topic.

Keywords

Please also provide a few keywords for your topic.

Body

The standard length of the manuscript is 1 page in total, including the title part and references. Authors may extend 1 more page, if necessary.

2. Submission

Please submit a **pdf file**, not the source file.

3. Figures and Tables

The authors may include figures and Tables. Please remind that this is a camera-ready paper, i.e. the items should be well visible when the manuscript is printed in A4 size. Please also keep the total file size not larger than 3MB in total.

References

- [2] F. Sushi, K. B. Beef, and R. Wine, "Tips for enjoying your dinner in Kobe", *J. of Happy Life* vol.12, 345 (1999).
- [3] A. Farmer, "An efficient way of putting a rock" in *Building Himeji-castle*, ed. T. Ikeda, pp. 123, First University Press, Kobe, 2000.